

Integrations

ADFS Authentication

V6.0.0

CONTENTS

1	ADFS Authentication	1
2	Installing ADFS Authentication	2
2.1	Prerequisite	2
2.2	Installing ADFS in LogPoint	2
2.3	Verifying the Installation	2
3	Configuring ADFS Authentication	4
3.1	Configuring Default Settings	7
3.2	Mapping Roles	8
4	Login with ADFS Authentication	10
5	Managing ADFS Users	15
6	Uninstalling ADFS	17
6.1	Uninstalling ADFS in LogPoint	17
7	Appendix	18
7.1	Installing the Duo Security in the ADFS Server	18
7.2	Selecting Duo Security in the ADFS Server	23

ADFS AUTHENTICATION

ADFS Authentication enables you to log into LogPoint using *Microsoft's Active Directory Federation Services (ADFS)*. ADFS provides you with single sign-on access to systems and applications located across trusted organizational units.

INSTALLING ADFS AUTHENTICATION

2.1 Prerequisite

LogPoint v7.0.0 or later

2.2 Installing ADFS in LogPoint

1. Go to *Settings >> System Settings>> Applications*.
2. Click **Import**.
3. **Browse** for the location of the downloaded .pak file for ADFS application.
4. Click **Upload**.

2.3 Verifying the Installation

1. Go to the **LogPoint login** page.
2. Click the **Other Authentication Options** link. You can find the **ADFS Authentication** login option.

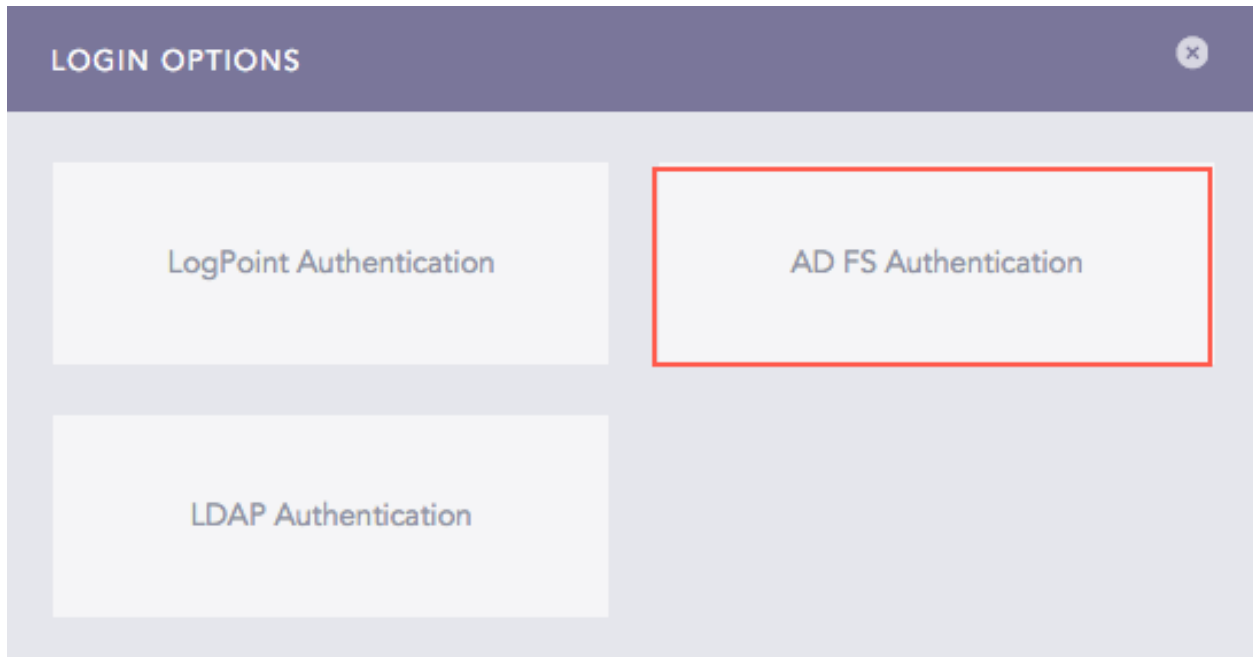


Fig. 1: ADFS Authentication Login Option

CONFIGURING ADFS AUTHENTICATION

1. Go to *Settings >> System Settings >> Plugins*.
2. Find **ADFS Authentication v6.0.0** and click **Manage**.

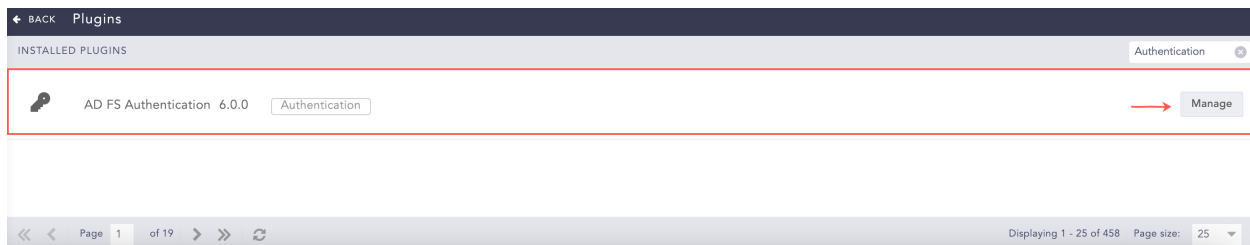


Fig. 1: Manage ADFS Authentication

3. Click **Add Server**.

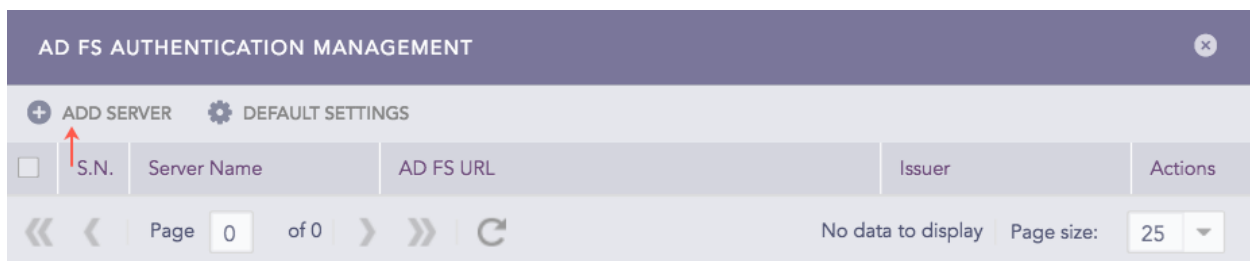


Fig. 2: Add ADFS Server

4. Enter a unique **Server Name**.

Note: For details on *ADFS* server side configuration, refer to the [Microsoft's documentation for Active Directory Federation Services](#).

5. Enter the fully qualified domain name of your *ADFS* server in the **ADFS URL** text box. LogPoint users will be redirected to this domain for authentication.
6. Copy the automatically generated **ADFS Endpoint URL**, which you will need while configuring LogPoint in your *ADFS* server. While adding LogPoint as a Relying Party Trust in the *ADFS* server, on the **Configure URL** page, select the **Enable support for the SAML 2.0 Web SSO protocol** option and provide the **ADFS Endpoint URL** in the **Relying party SAML 2.0 SSO service URL** text box.
7. Enter the *Relying party identifier* in the **Issuer** text box. You can find the *Relying party identifier* under the **Identifier** column of the **Relying Party Trust** panel of your *ADFS* server.
8. Provide the token-signing certificate of your *ADFS* server in the **ADFS Certificate** text box. You can obtain the certificate from the **Certificates** panel of the *ADFS* server. Export the certificate in the *Base-64 encoded X.509 (.CER)* format, and copy the content in the **ADFS Certificate** text box.
9. Enter the **Response Username Field** and **Response Role Field**, which are used to extract the username and role from the *ADFS* server.

After adding LogPoint as a Relying Party Trust in the *ADFS* server, you need to create claim rules for username and role. While creating the claim rules, you must map the LDAP attributes to two outgoing claim types. One of the claim type needs to be *Role* for the role, and another can be any other attribute for the username. After creating the rules, go to the **Edit Claim Rules** page and select the created rule. Then, click **View Rule Language**. The **Response Username Field** and **Response Role Field** are the values of the **types** parameter.

10. Click **Save**.

AD FS SERVER INFORMATION

AD FS SERVER

Server Name

Server

AD FS URL

https://win-on8hpkn98mu.adfs.local

AD FS Endpoint URL

https://192.168.4.235/pluggables/Authentication/ADFSAuthentication/login

ISSUER

logpoint-sso

AD FS CERTIFICATE

-----BEGIN CERTIFICATE-----
MIIC8DCCAdigAwIQAIAI9gwwTn6RLrZOB3srpTANBgqhkiG9w0BAQsFADA0
MTIwMAYDVQQDEylBREZTIFNpZ25pbmcgLSBXSU4tT044SFBLTjk4TVUuYWRmcy5s
b2NhbDAeFw0xODA2MDcwNzE3MjhaFw0xOTA2MDcwNzE3MjhaMDQxMjAwBgNVBAMT
KUFERIMgU2InbmluZyAtIFdJTj1PTjhIUetOOTHNV55hZGZzLmxvY2FsMIIBIjAN
BgqhkiG9w0BAQEFAAOCAQ8AMIIBCgKCAQEAzBSuOXvWB2QQCZ4lbvZhF7agac0B
oiWDTBt0z1rIB42bncSkW6wCNm0dwzKI6bUdzMDdZAewL4D0prT/7sTRj32PCvB2
iFMcO+dfDfJ5r565vnwBtByWJVJHRIXQSpNXGzxdpmLs77m7pCal5VBFdtWNb4Zx
4Q9ip+2+BbSmVMZly3J2mWfNO/LKEtIJ+xAJftL9DRamkSKig+nlxpyPKTuFLrJ
J+wnya5sCBZhL0+t9F88PaVNQlaPlm/YGT94UVBUDBOHRPcPe1dExvqrGb+W1dc
iddTHYv2k5aw.Ja3fEtxlQDRPaVPva7OV5D6nIEaOuUYPZXhXvVN1WvaYAwIDAQAB

Response Username Field

user

SaveCancel

Fig. 3: AD FS Server Information Panel

Note: Once you configure the ADFS Authentication application, the panel removes the **Add Server** option and includes the **Roles Mapping** option.

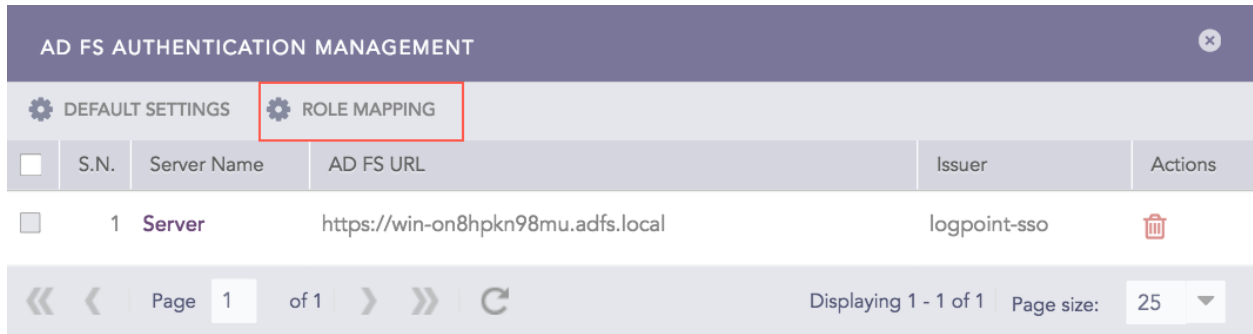


Fig. 4: Add ADFS Server

3.1 Configuring Default Settings

1. Click the **Default Settings**.
2. Select a LogPoint user group as the **Default Role**. The application assigns the user group to the ADFS users whose role attribute has not been returned by the ADFS server.
3. Click **Save**.

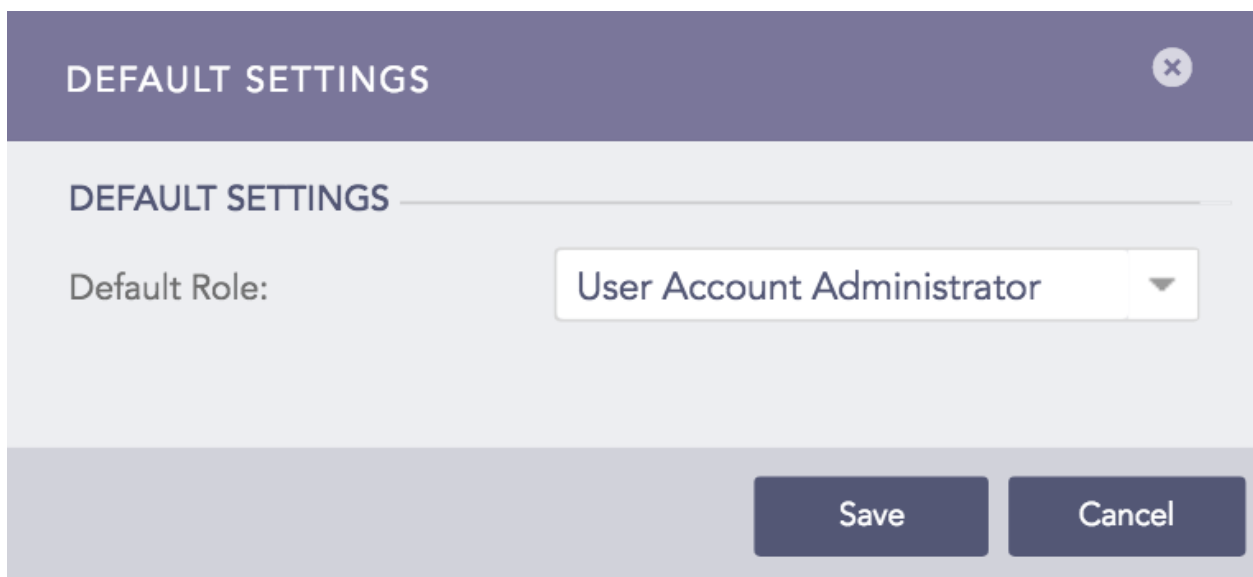


Fig. 5: Default Settings Panel

3.2 Mapping Roles

You can map an ADFS role to a LogPoint user group to define access permission on LogPoint.

Follow these steps to map an ADFS role to a LogPoint user group:

1. Click **Roles Mapping**.

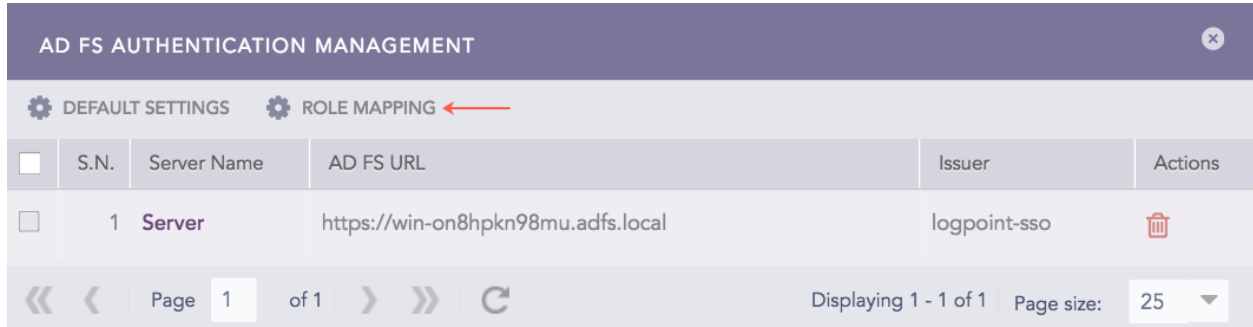


Fig. 6: Adding Role Mapping

2. Enter an **ADFS Role**.
3. Select a **LogPoint User Group** to assign to the ADFS role mentioned above.
4. Click **Add**. A table lists all the mapped ADFS roles and LogPoint user groups. You can either edit or delete the added role mappings from the table.

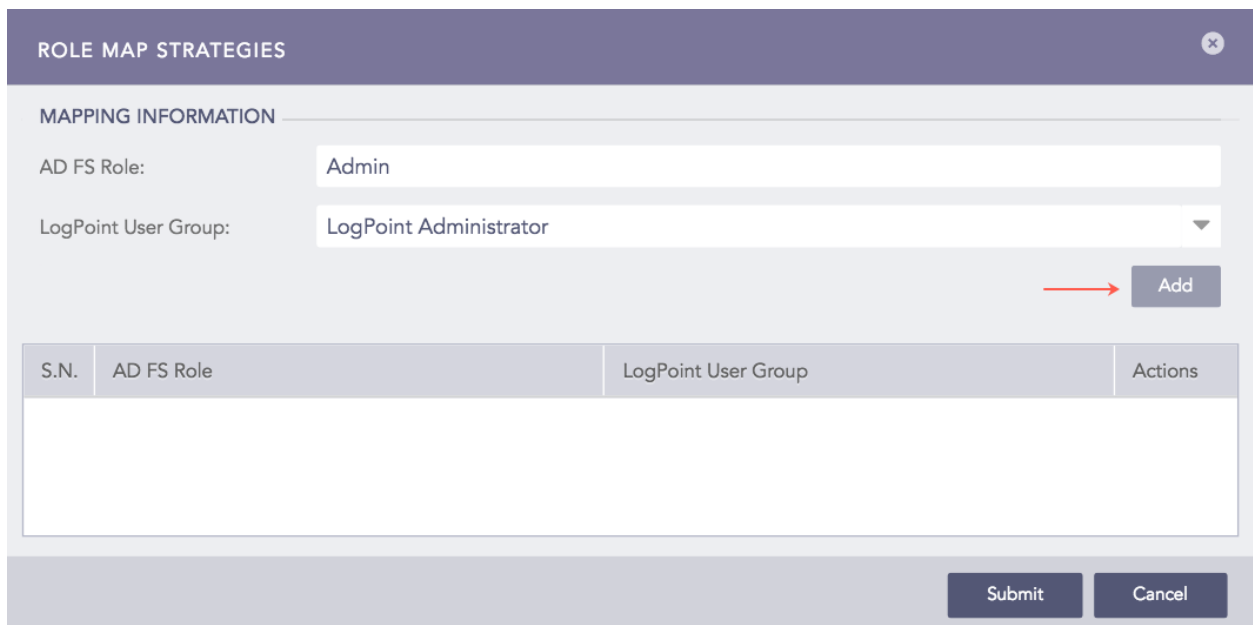


Fig. 7: ADFS Role Mapping

ROLE MAP STRATEGIES

MAPPING INFORMATION

AD FS Role:

LogPoint User Group:

Add

S.N.	AD FS Role	LogPoint User Group	Actions
2	Admin	LogPoint Administrator	^ v

Submit

Cancel

Fig. 8: ADFS Role Mapping Added

Note:

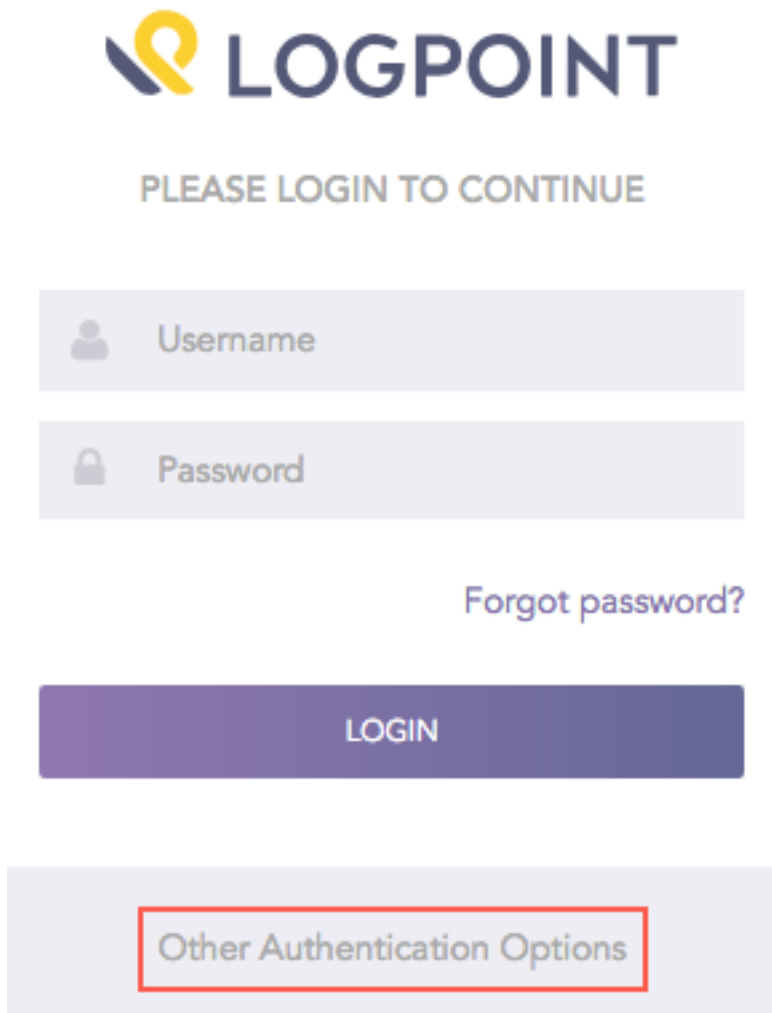
- Mapping roles in the ADFS Authentication application is mandatory.
- The ADFS role to LogPoint user group mapping is one-to-one, which means you can map an ADFS role to a single LogPoint user group only.

LOGIN WITH ADFS AUTHENTICATION

After configuring the ADFS Authentication, you can log into LogPoint using the ADFS credentials.

Follow these steps to log in with the ADFS Authentication:

1. Go to the **LogPoint login** page.
2. Click the **Other Authentication Options** link.



The image shows a login interface for Logpoint. At the top is the Logpoint logo, which consists of a stylized yellow and blue icon followed by the word "LOGPOINT" in a bold, dark blue sans-serif font. Below the logo is the text "PLEASE LOGIN TO CONTINUE" in a smaller, grey sans-serif font. There are two input fields: the first is labeled "Username" with a grey user icon to its left, and the second is labeled "Password" with a grey lock icon to its left. Both fields have a light grey background. Below the password field is a link that says "Forgot password?" in a purple sans-serif font. Underneath the link is a dark purple rectangular button with the word "LOGIN" in white, bold, sans-serif capital letters. At the bottom of the form is a light grey rectangular box containing a button labeled "Other Authentication Options" in a grey sans-serif font. This button is highlighted with a red rectangular border.

Fig. 1: Other Authentication Options

3. Select **ADFS Authentication**.

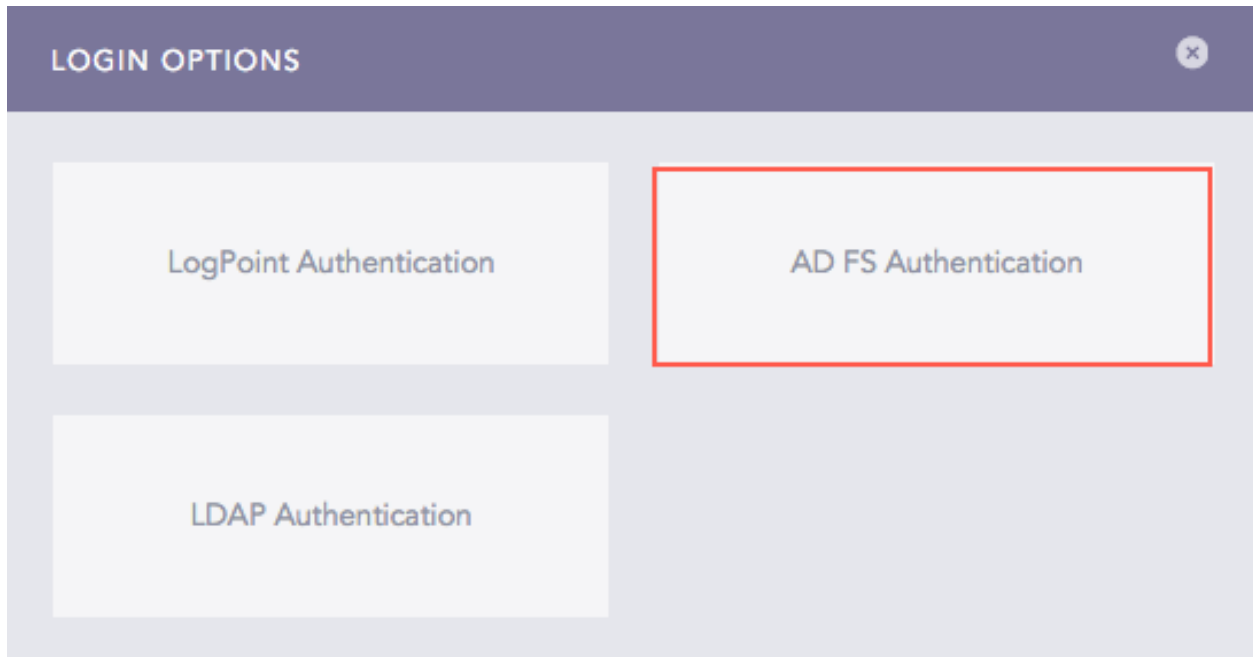


Fig. 2: Login Options

4. Click **Login**.

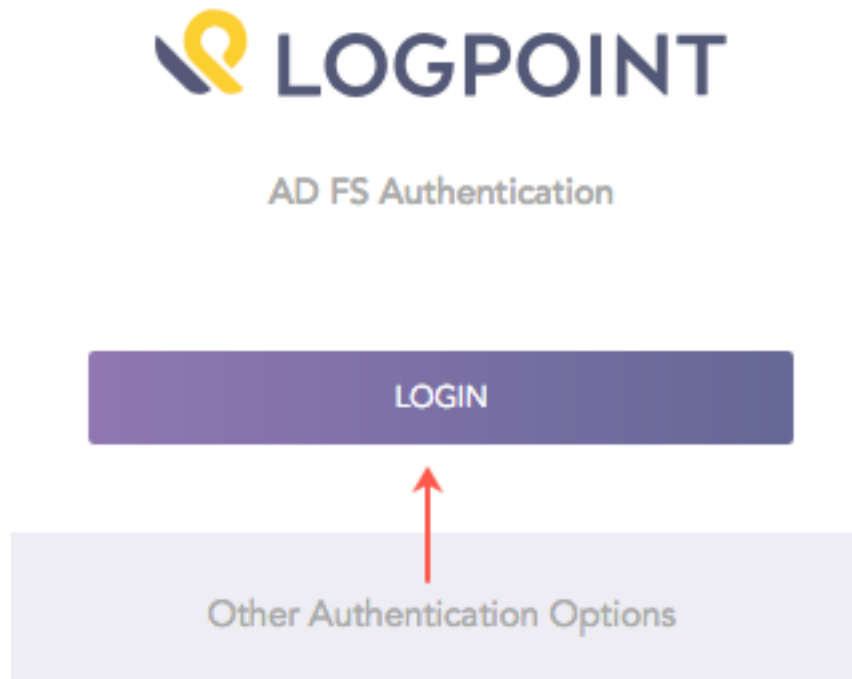
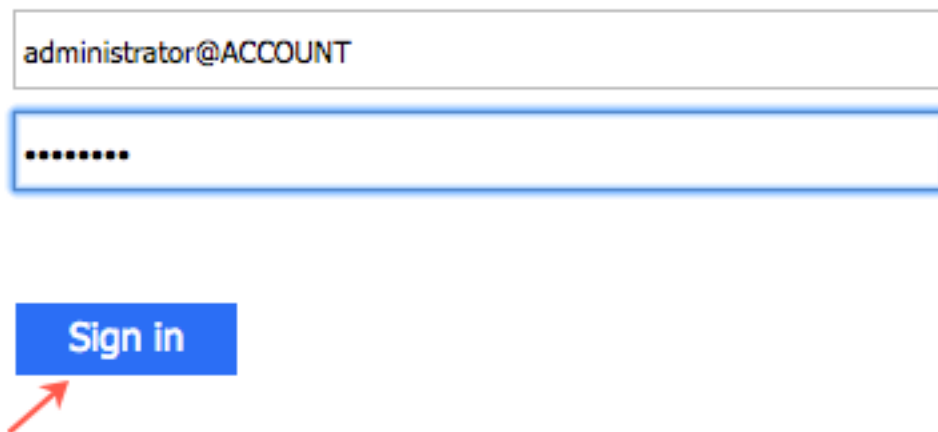


Fig. 3: ADFS Authentication Login

5. Enter your ADFS **Username** and **Password**.
6. Click **Sign in** to log into LogPoint.

Account ADFS

Sign in with your organizational account



administrator@ACCOUNT

Sign in

Fig. 4: ADFS Server Login

Important:

- The time zones of the ADFS server and LogPoint must be identical.
- If you have configured the Duo Security in your ADFS server, you need to further verify with the Duo's two-factor authentication. For more details, refer to the [Duo Security Manual](#).
- Refer to the [Appendix](#) section to obtain information on installing and configuring the Duo Security in the ADFS server.

Once you log in with the ADFS credentials, the system adds *adfs* as a prefix to your username. For example, if you log in as bob with the ADFS Authentication option, LogPoint updates your username as *adfs_bob*.

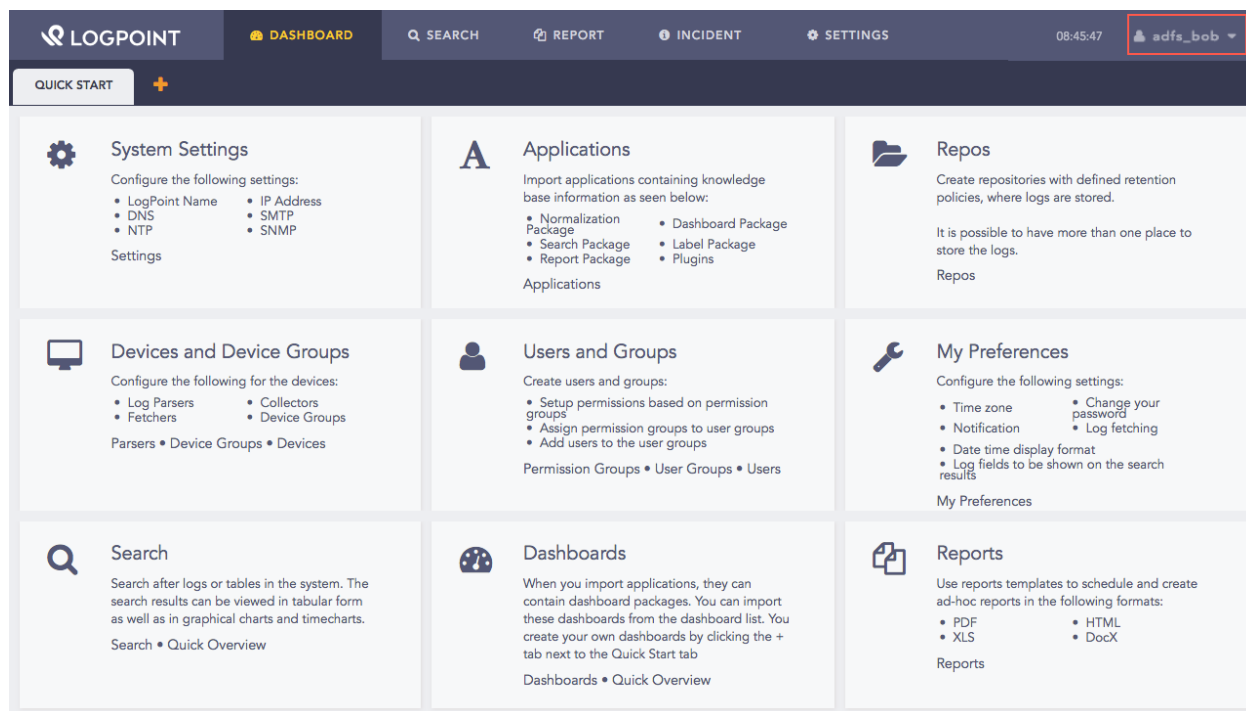


Fig. 5: User Logged In with ADFS Authentication

Note: Once you log in with the ADFS Authentication, you get signed into LogPoint for a period of session time. You can define the session time in the ADFS server.

MANAGING ADFS USERS

LogPoint users with sufficient privileges can manage ADFS users.

Follow these steps to manage ADFS users:

1. Go to *Settings >> System Settings >> User Accounts*.
2. Click **Users**.
3. In the **Plugin Users** drop-down, click **ADFS Authentication**.

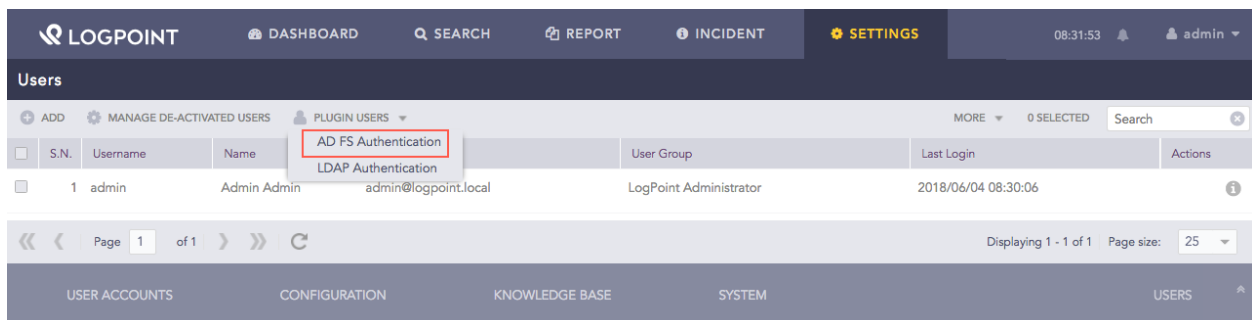


Fig. 1: Plugin Users

4. Click the **De-Activate User** icon from the **Actions** column to deactivate a user.

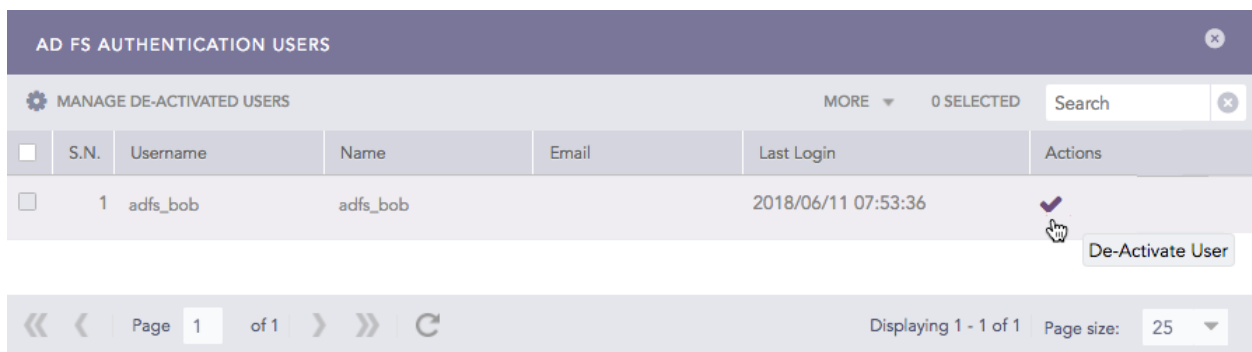


Fig. 2: De-Activate ADFS Users

5. Click **Yes**.
6. Click **Manage De-Activated Users**.

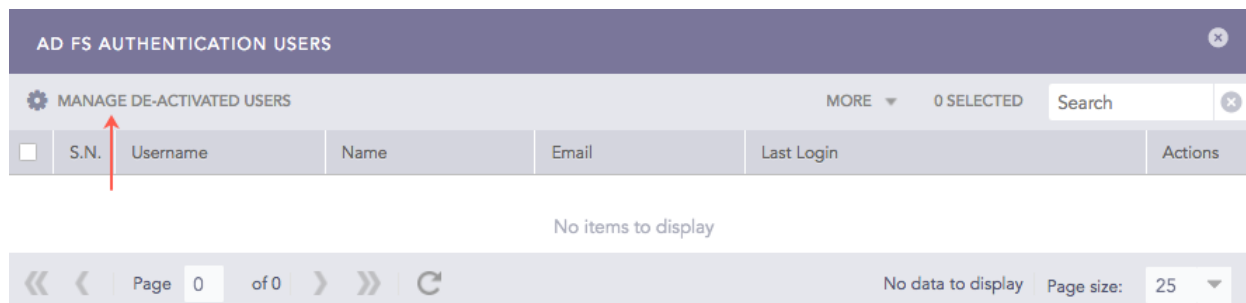


Fig. 3: Manage De-Activated ADFS Users

7. Click the **Activate User** icon to activate or the **Delete** icon to delete the deactivated user.

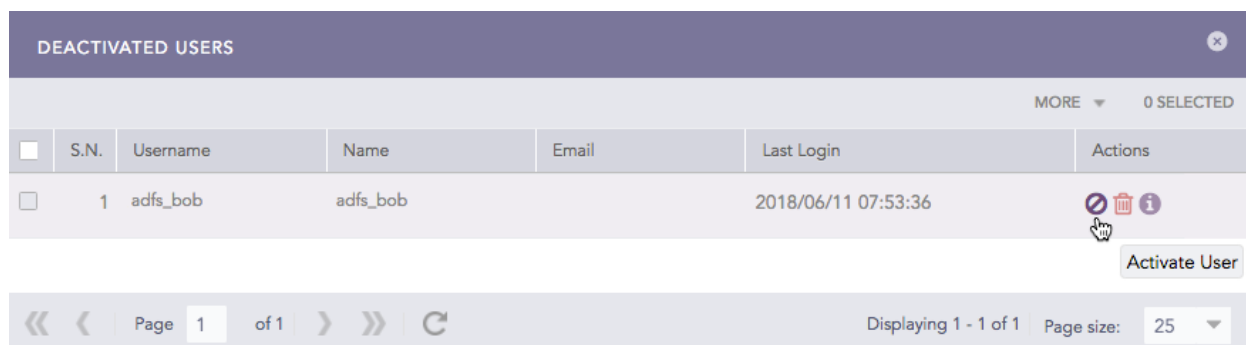


Fig. 4: Activate the De-Activated ADFS User

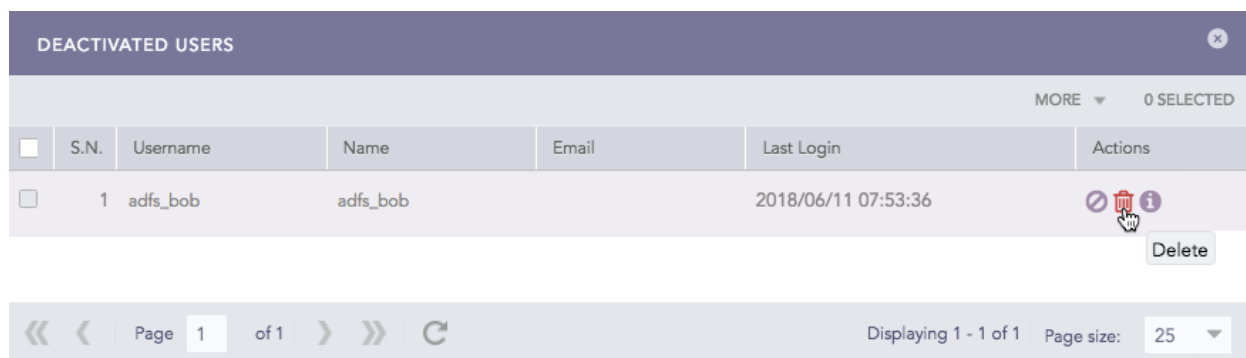


Fig. 5: Delete the De-Activated ADFS User

UNINSTALLING ADFS

6.1 Uninstalling ADFS in LogPoint

1. Go to *Settings >> System Settings >> Applications*.
2. Click the **Uninstall** (🗑️) icon from the **Actions** column.

Note: You must remove the **ADFS Authentication** configuration to delete the application.

APPENDIX

The following section guides you through the process of installing and configuring the Duo Security in the *ADFS* server.

7.1 Installing the Duo Security in the ADFS Server

1. Launch the Duo ADFS installer package provided by *Duo Security* in the *ADFS* server.
2. Click **Next**.



Fig. 1: Duo ADFS MFA Adapter Setup

3. Enter the **Integration key**.
4. Enter the **Secret key**.
5. Enter the **API hostname**.

Note: Refer to the **Appendix** section of the [Duo Security Manual](#) to retrieve the **Integration key**, the **Secret key**, and the **API hostname**.

6. Select **Bypass Duo authentication when offline** to enable login when the *Duo Security* is offline.
7. Click **Next**.

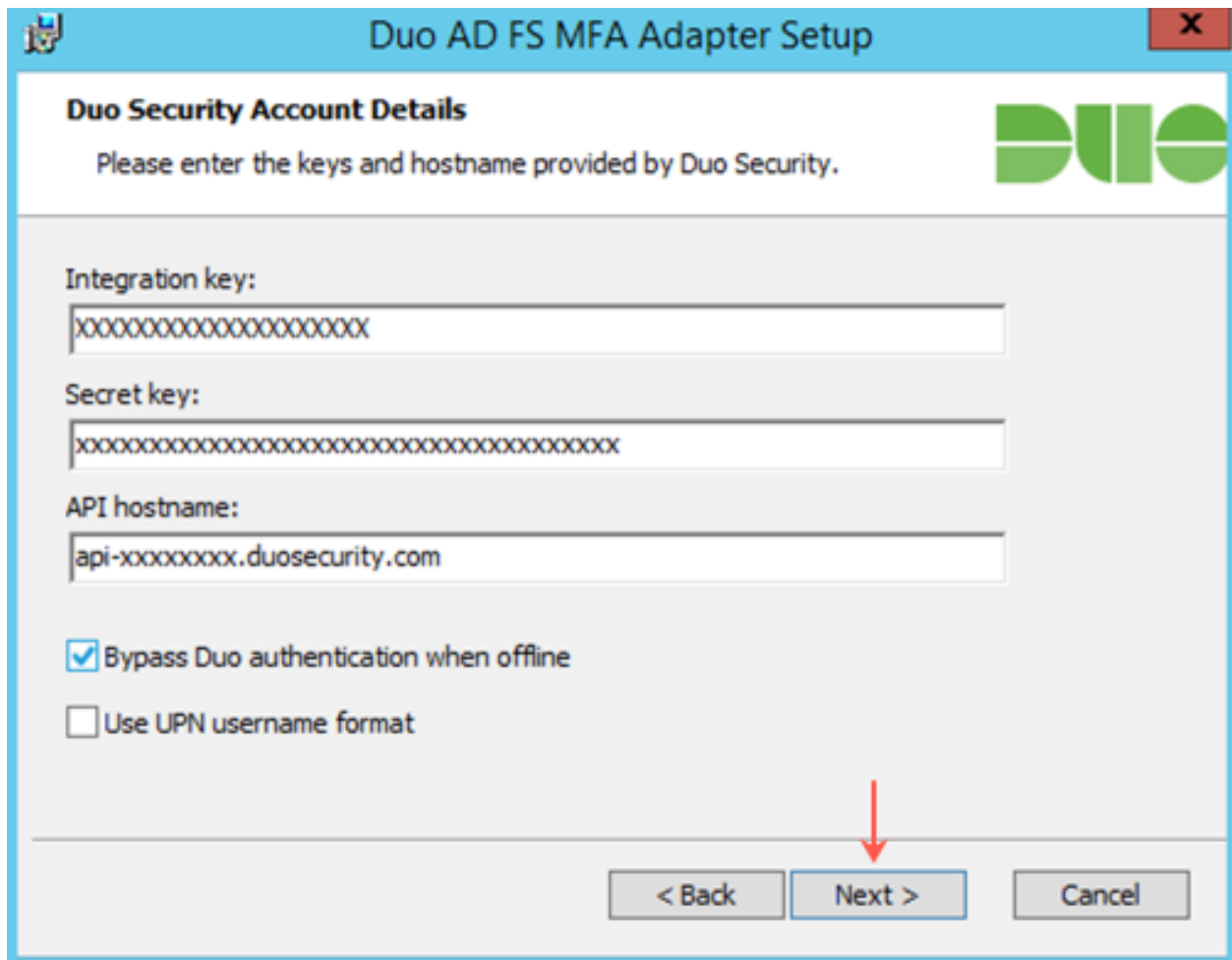


Fig. 2: Duo Security Account Details

8. Select **Generate new session key**.
9. Click **Next**.

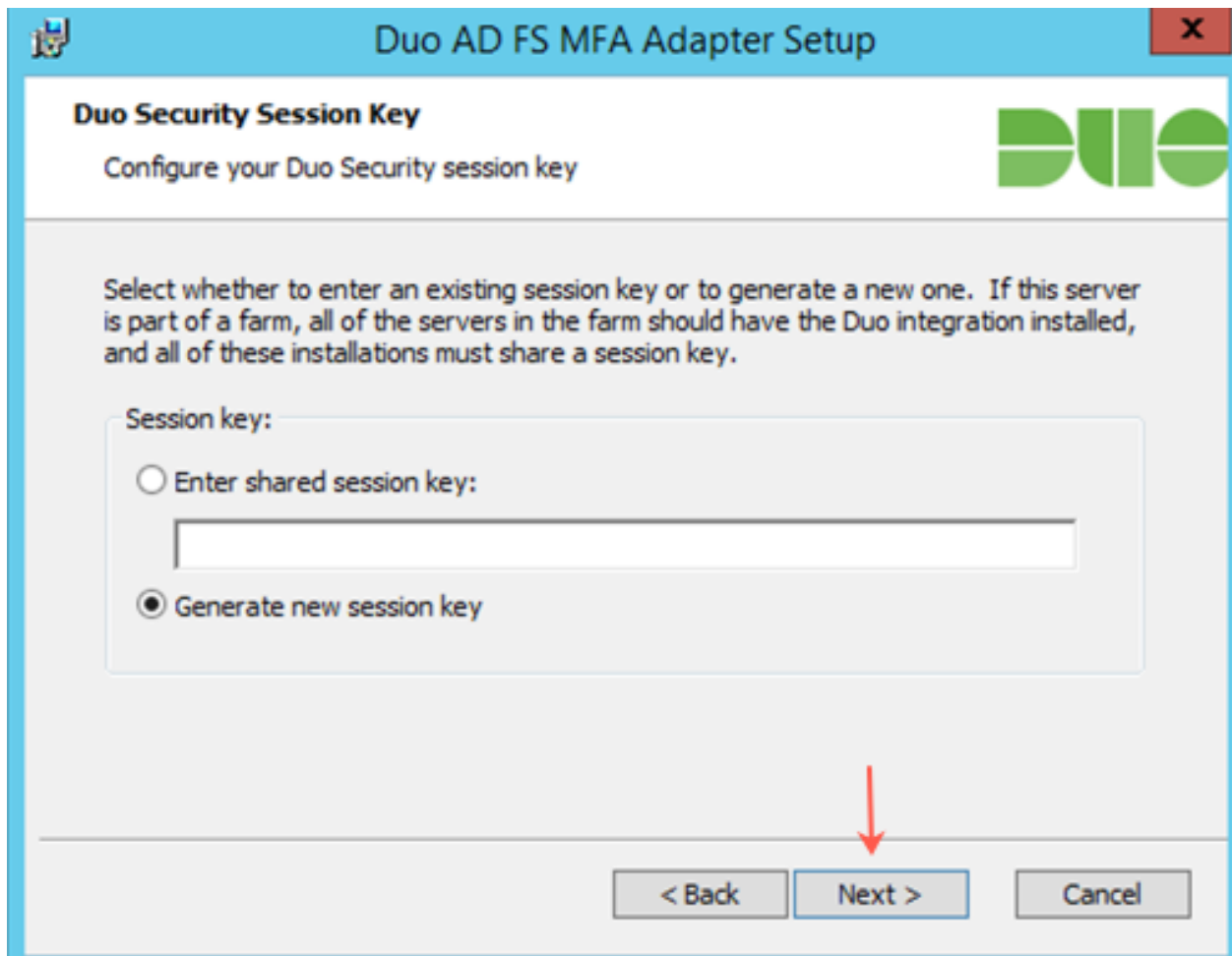


Fig. 3: Generating New Duo Security Session Key

10. Click **Install**.

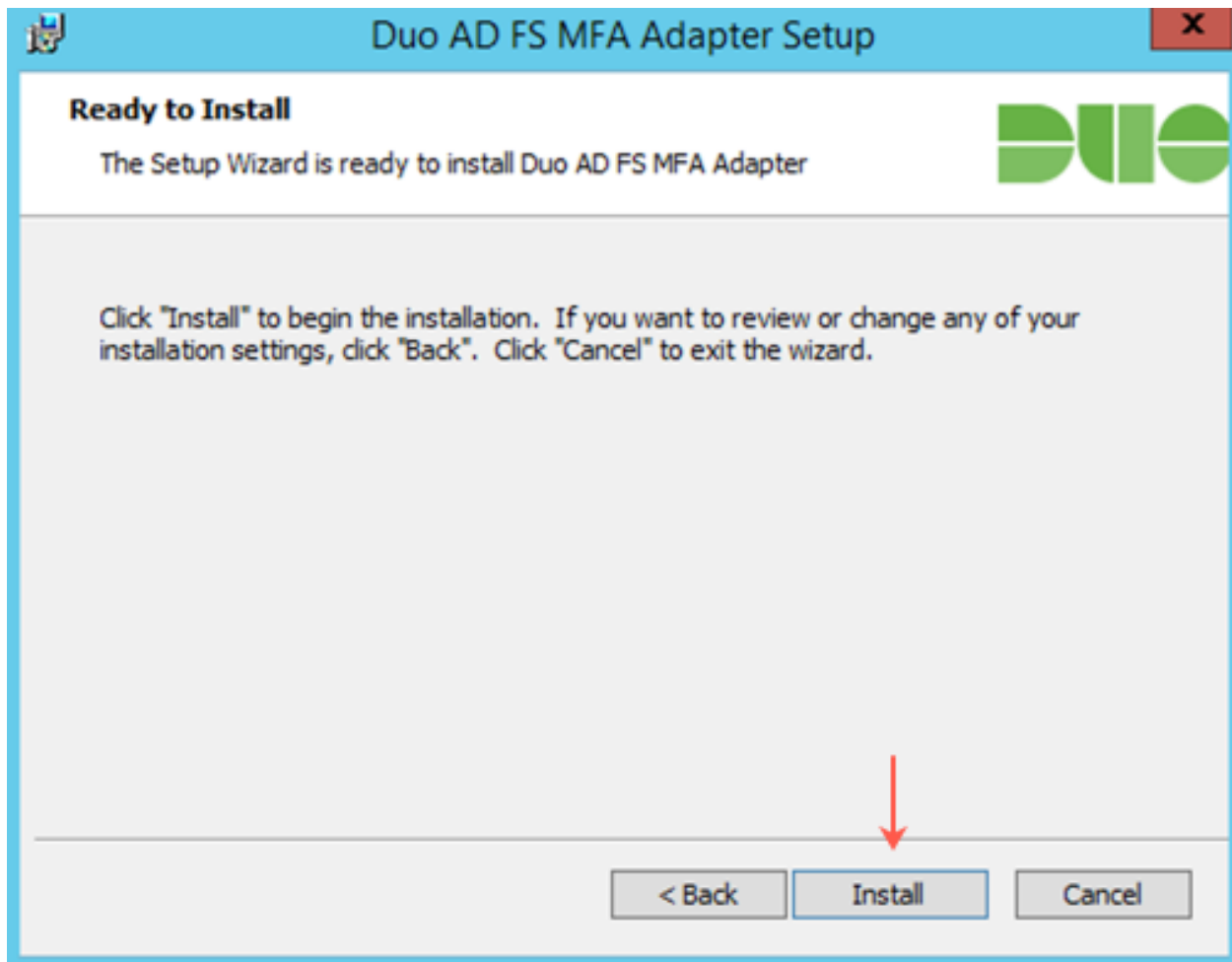


Fig. 4: Installing Duo ADFS MFA Adapter

11. Click **Finish**.

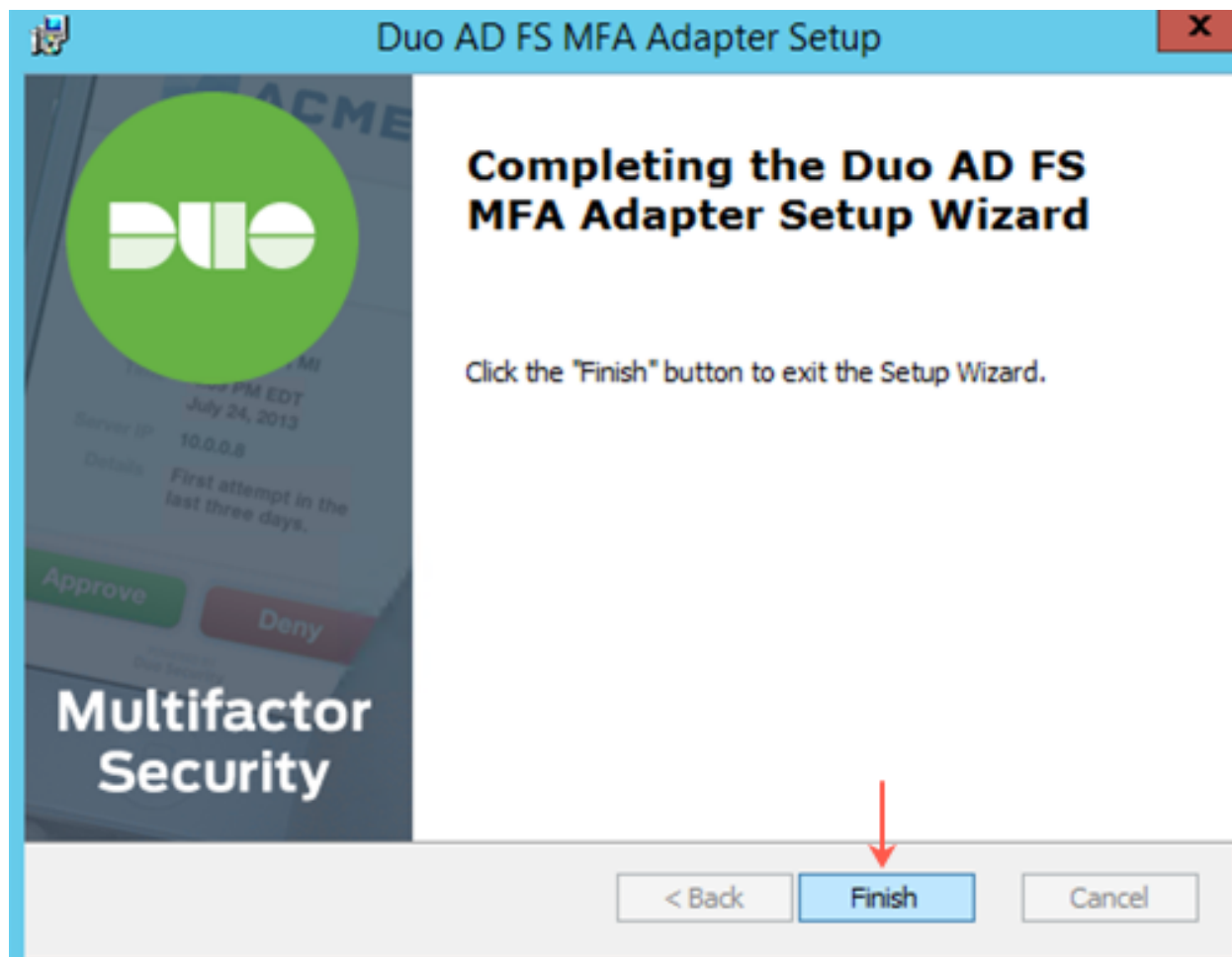


Fig. 5: Completing the Duo ADFS MFA Adapter Setup Wizard

7.2 Selecting Duo Security in the ADFS Server

1. Go to the *ADFS Server >> ADFS >> Authentication Policies*.
2. Click **Edit Global Multi-factor Authentication**.

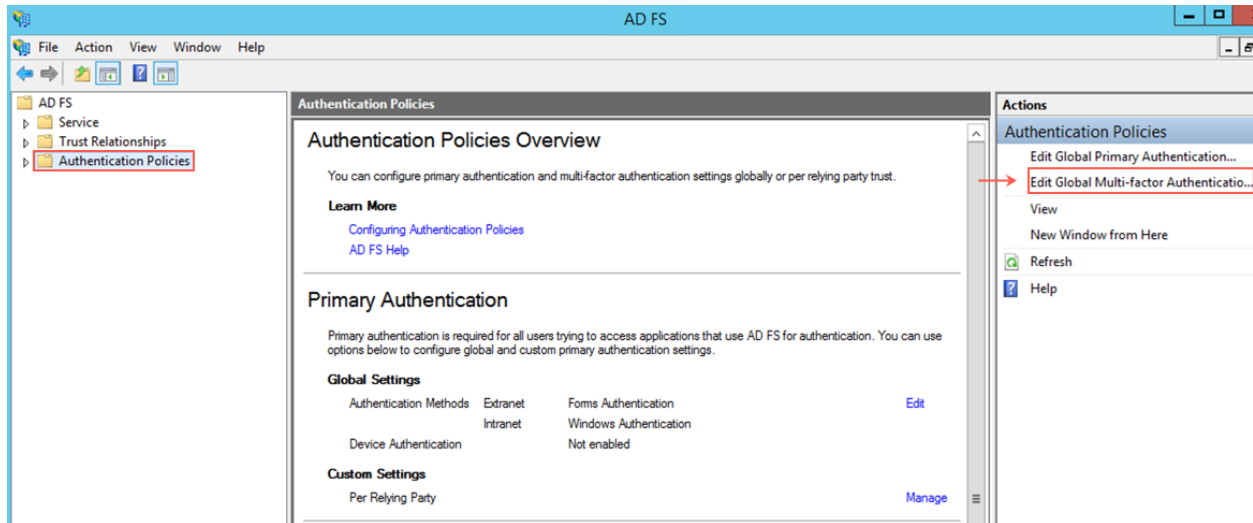


Fig. 6: Authentication Policies

3. Select **Duo Authentication for ADFS 1.2.0.17**.
4. Click **OK**.

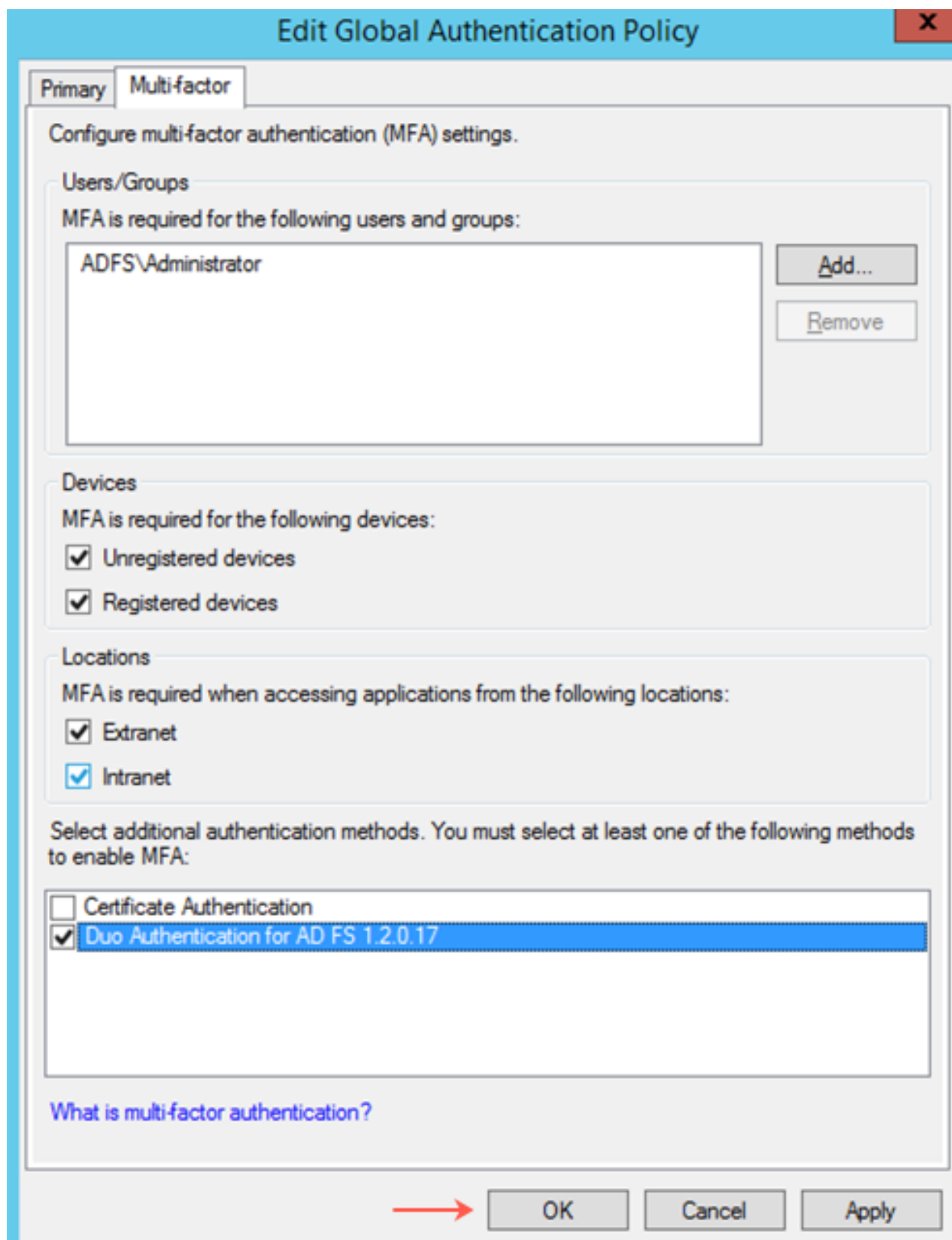


Fig. 7: Edit Global Authentication Policy Panel